

Ocular Hypertension Treatment Study: 20-Year Incidence & Severity of Primary Open-Angle Glaucoma (POAG)

Richard Parrish II, MD

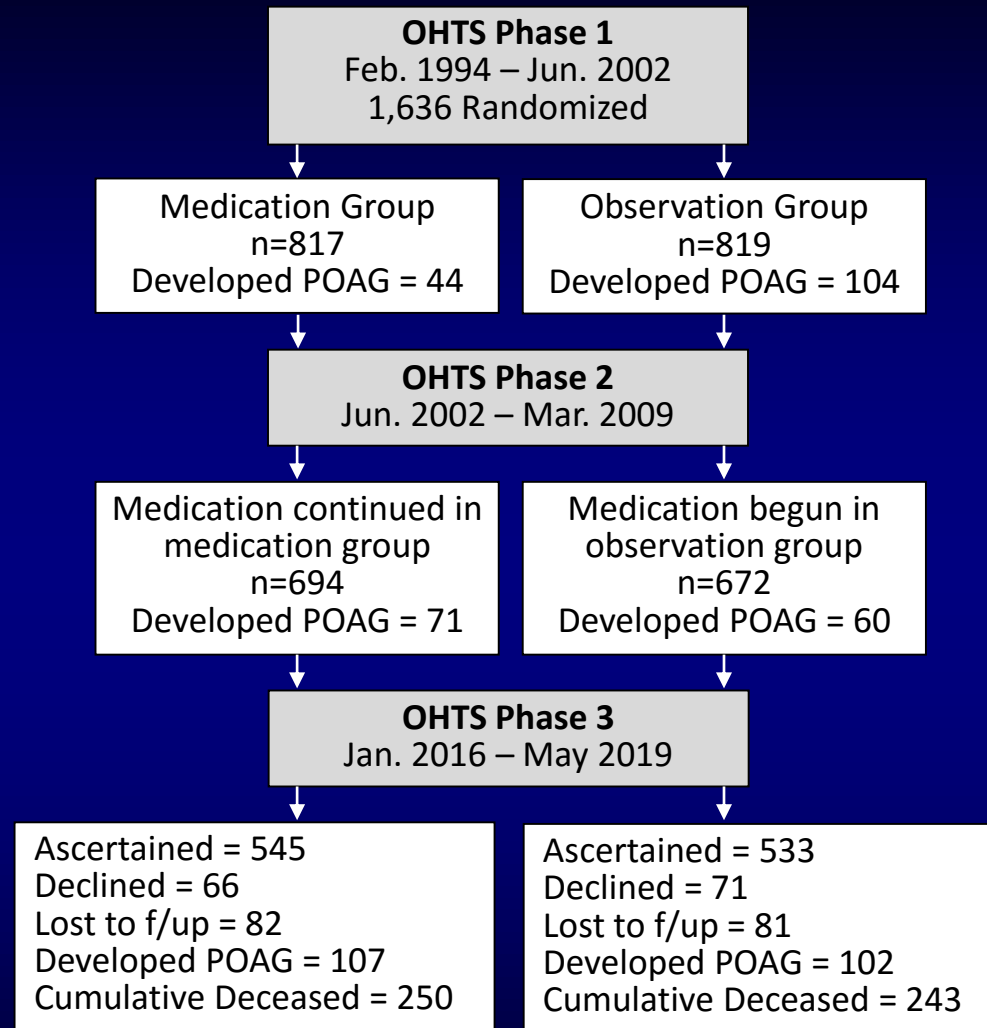
Bascom Palmer Eye Institute

The Ocular Hypertension Treatment Study Group (OHTS)

AAO October 12, 2019

National Eye Institute, National Center for Minority Health and Health Disparities,
NIH grants EY02580, EY02581, EY02582, EY02583,
Unrestricted Grant from Research to Prevent Blindness

OHTS Consort Diagram



OHTS Phase 1 & 2 Summary

- Early medical treatment reduces the cumulative incidence of POAG.
- Absolute benefit is greatest in high risk individuals.
- Little absolute benefit of early treatment in low risk individuals.

OHTS Phase 3

Specific Aims:

1. Determine the 20-year incidence and severity of POAG
2. Develop a 20-year prediction model for conversion to POAG
3. Develop a prediction model to identify rapid progressors
4. Association of QOL with clinical findings.

OHTS Phase 1

Incidence of POAG is nearly 60% lower in the Medication group.

Hazard ratio for medication group at 60 months
0.40 (0.27-0.59); $P \leq 0.001$

Kass, et al. 2002

OHTS Phase 2

Incidence of POAG is not different between Observation and Medication groups.

Hazard Ratio for medication group
1.06 during Phase 2 (0.74-1.50); $P = 0.77$

Kass, et al. 2010

Baseline and 20-year OHTS data for ascertained participants

| | Randomization Assignment | | | |
|--------------------------------------|--------------------------|------------------|-------------|------------------|
| | Medication | | Observation | |
| | N | Mean \pm SD | N | Mean \pm SD |
| Baseline CCT | 511 | 573.0 \pm 39.5 | 492 | 576.6 \pm 36.5 |
| Baseline IOP | 545 | 24.9 \pm 2.7 | 533 | 25.0 \pm 2.7 |
| IOP when ascertained | 482 | 18.2 \pm 4.3 | 471 | 18.7 \pm 4.6 |
| Baseline Vertical CD Ratio | 545 | 0.4 \pm 0.2 | 533 | 0.4 \pm 0.2 |
| Vertical CD Ratio when ascertained | 288 | 0.5 \pm 0.2 | 292 | 0.5 \pm 0.2 |
| Baseline LOGMAR VA (Snellen) | 545 | 0.0 \pm 0.1* | 1078 | 0.0 \pm 0.1* |
| LOGMAR VA (Snellen) when ascertained | 384 | 0.1 \pm 0.2* | 763 | 0.1 \pm 0.2* |

* 0.0 = 20/20, 0.1 = 20/25, 0.2 = 20/32

Baseline and 20-year OHTS data for ascertained participants

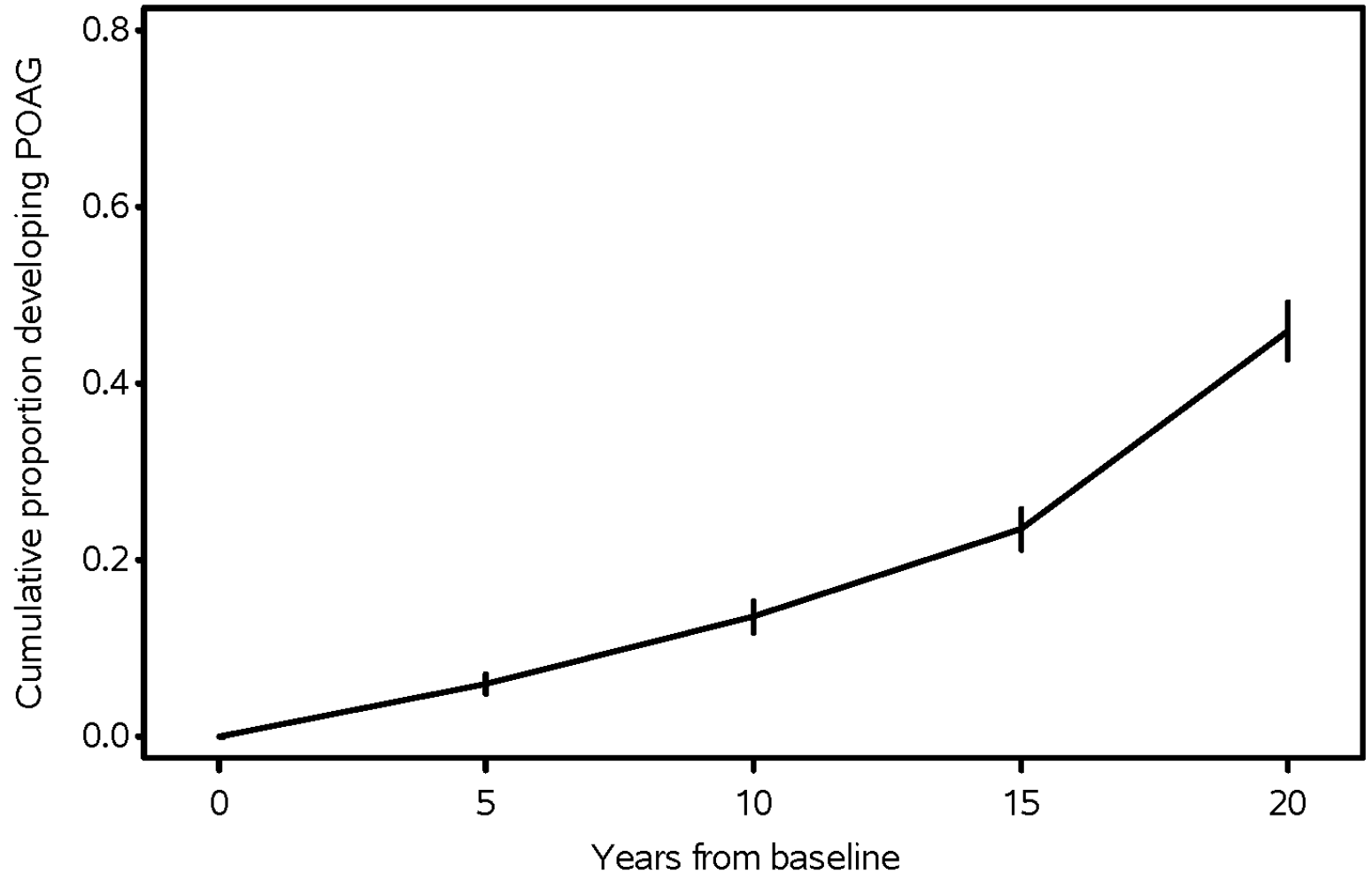
| | Randomization Group | | | |
|----------------------|---------------------|----------------|-------------|----------------|
| | Medication | | Observation | |
| | N | Mean \pm SD | N | Mean \pm SD |
| Age | | | | |
| Baseline Age | 545 | 55.2 \pm 9.2 | 533 | 55.3 \pm 9.4 |
| Age When Ascertained | 535 | 74.3 \pm 8.7 | 528 | 74.8 \pm 8.7 |

| | Medication | | Observation | |
|---------------------|------------|------|-------------|------|
| | N | % | N | % |
| Sex | | | | |
| Male | 240 | 44.0 | 233 | 43.7 |
| Female | 305 | 56.0 | 300 | 56.3 |
| Race | | | | |
| Black, Non-Hispanic | 125 | 22.9 | 109 | 20.5 |
| Hispanic | 4 | 0.7 | 14 | 2.6 |
| White, Non-Hispanic | 405 | 74.3 | 399 | 74.9 |
| Other | 11 | 2.0 | 11 | 2.1 |

Baseline and 20-year OHTS data for ascertained participants

| | Randomization Assignment | | | |
|----------------------|--------------------------|----------------|-------------|----------------|
| | Medication | | Observation | |
| | N | Mean \pm SD | N | Mean \pm SD |
| Baseline MD | 545 | 0.2 \pm 1.1 | 533 | 0.1 \pm 1.1 |
| MD when ascertained | 474 | -2.4 \pm 4.7 | 460 | -2.6 \pm 4.5 |
| Baseline PSD | 545 | 1.9 \pm 0.2 | 533 | 1.9 \pm 0.3 |
| PSD when ascertained | 474 | 2.7 \pm 2.0 | 460 | 2.8 \pm 2.0 |

Cumulative Incidence of POAG: All

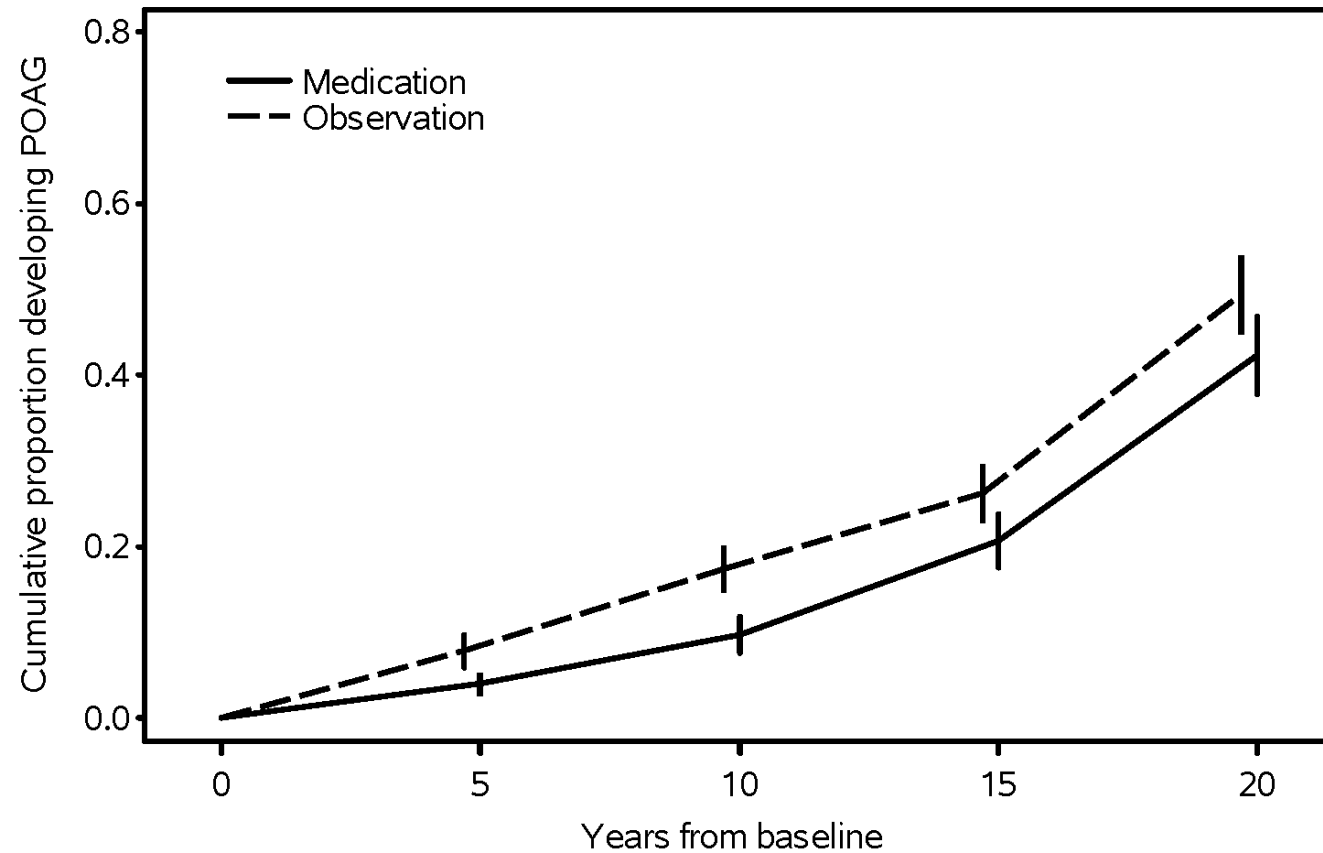


| | 0 | 5 | 10 | 15 | 20 | Total |
|-------------|------|------|------|------|-----|-------|
| Ascertained | 1636 | 1619 | 1459 | 1281 | 897 | |
| POAGs | 0 | 91 | 107 | 98 | 192 | 488 |
| Deaths | 0 | 46 | 77 | 110 | 260 | 493 |

POAG Conversions in OHTS (1994-2019)
1,636 participants, median follow-up 20 years
26,350 person-years

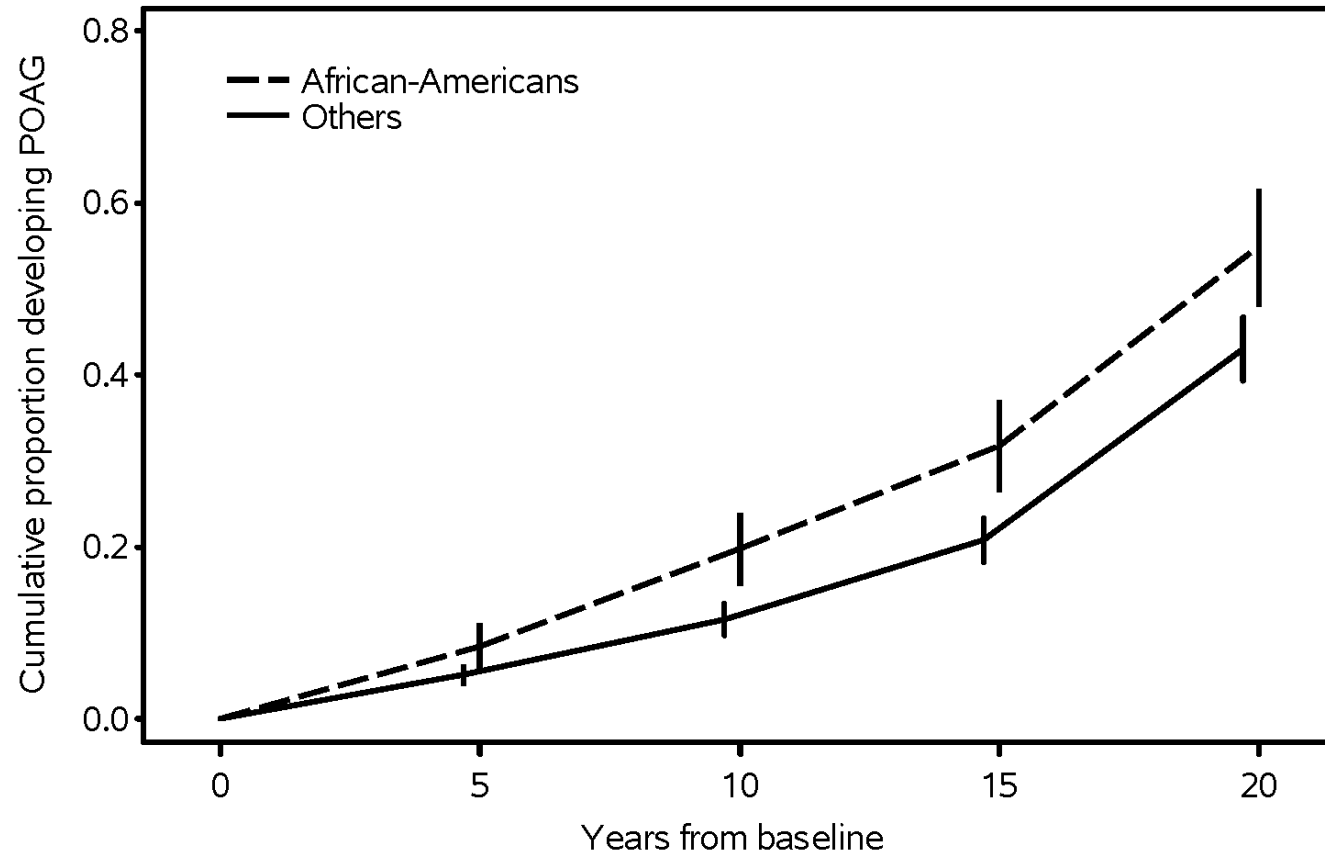
- 488 participants developed POAG in one or both eyes
 - 201 participants developed only disc POAG
 - 64% 128/201 in 1 eye
 - 36% 73/201 in 2 eyes
 - 287 participants developed visual field POAG (with or without disc POAG)
 - 67% 192/287 in 1 eye
 - 33% 95/287 in 2 eyes

Cumulative Incidence of POAG by Randomization



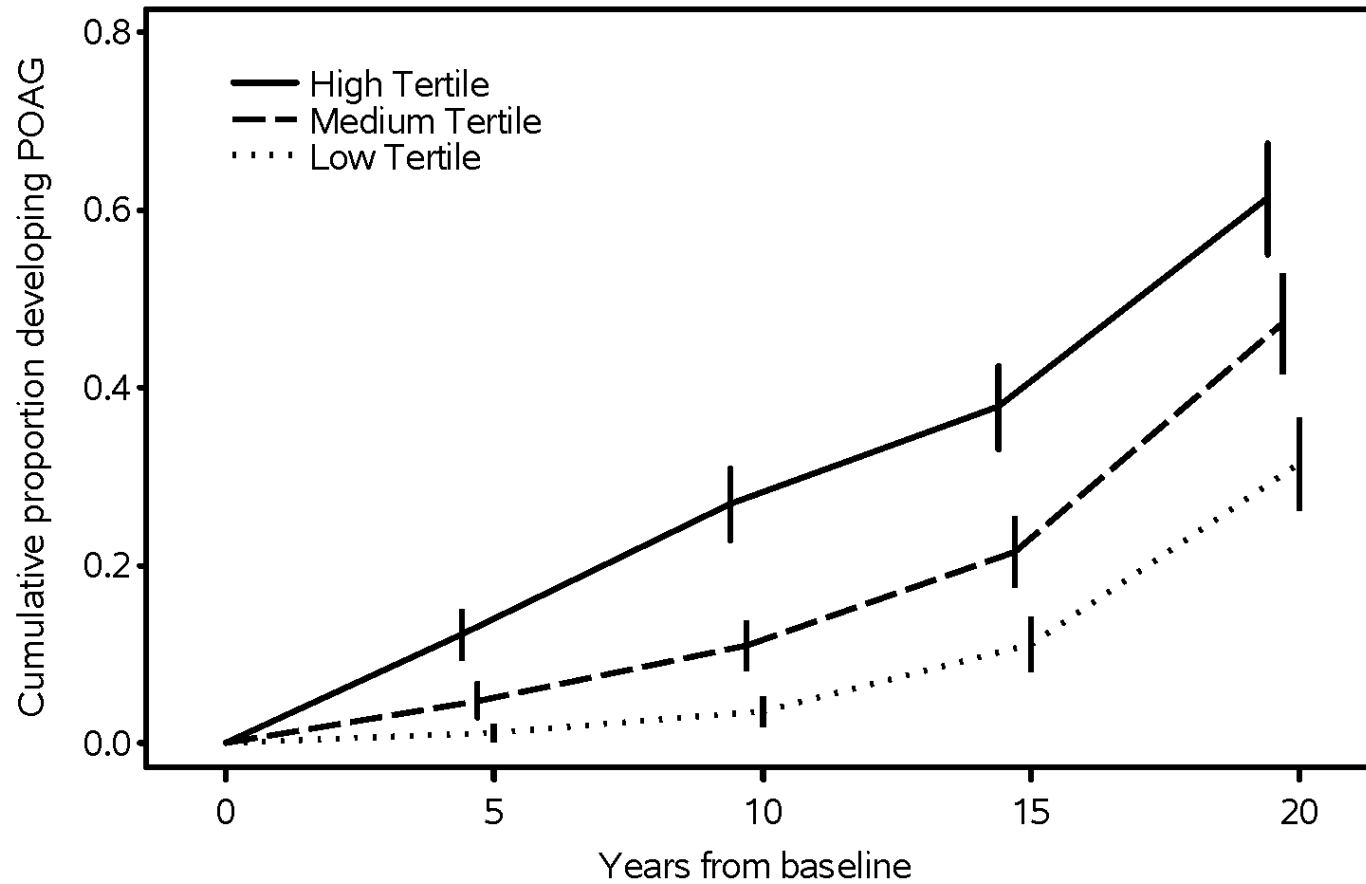
| | 0 | 5 | 10 | 15 | 20 | Total |
|------------------|-----|-----|-----|-----|-----|-------|
| Meds Ascertained | 817 | 806 | 730 | 653 | 443 | |
| POAGs | 0 | 31 | 38 | 57 | 96 | 222 |
| Deaths | 0 | 20 | 44 | 62 | 124 | 250 |
| Obs Ascertained | 819 | 813 | 729 | 628 | 454 | |
| POAGs | 0 | 60 | 69 | 41 | 96 | 266 |
| Deaths | 0 | 26 | 33 | 48 | 136 | 243 |

Cumulative Incidence of POAG by Race



| | | 0 | 5 | 10 | 15 | 20 | Total |
|-------|-------------|------|------|------|-----|-----|-------|
| AA | Ascertained | 407 | 399 | 355 | 304 | 201 | |
| | POAGs | 0 | 31 | 40 | 25 | 48 | 144 |
| | Deaths | 0 | 10 | 20 | 23 | 56 | 109 |
| Other | Ascertained | 1229 | 1220 | 1104 | 977 | 696 | |
| | POAGs | 0 | 60 | 67 | 73 | 144 | 344 |
| | Deaths | 0 | 36 | 57 | 87 | 204 | 384 |

Cumulative Incidence of POAG by Risk Tertiles



| | 0 | 5 | 10 | 15 | 20 | Total |
|-----------------|---|----|----|----|----|-------|
| High Risk POAGs | 0 | 59 | 65 | 36 | 50 | 210 |
| Med. Risk POAGs | 0 | 22 | 30 | 35 | 77 | 164 |
| Low Risk POAGs | 0 | 6 | 11 | 25 | 62 | 104 |

Future Reports

1. Risk factors for conversion/progression
2. Impact of POAG on QoL and clinical findings